

MEMBER  
**CREDAI**  
BELAGAVI

*Smart City with Smart Homes...*

RERA Registration No.,  
PR/KN/170731/000616

# Sky nest

**2 BHK FLATS**

Yes **VISHAL**  
infrabuild Ltd.  
cares more, shares more



## About Belgaum



Belgaum district is situated in the north - western region of Karnataka. It is a popular tourist destination owing to its rich historical background & natural beauty. It is well known for its pleasant climate throughout the year. It is at its coldest in winter (November - February) & has unique religious shrines.

**Kamala Basti :** One of the oldest fort in the heart of Belgaum City in which two Jain bastis were built in 1204 by the Late Chalukyan style. The Kamala Basti has a huge protruding lotus (Kamala) in its ceiling & houses the idol of the twenty-second Jain Teerthankara Neminatha.

**Ramakrishna Ashram :** Ramakrishna ashram in Belgaum conducts Ramakrishna's teachings regarding the highest truths of spiritual life delivering in the simplest language.

**Military Mahadev :** Is one of the favorite place for Belgaumites to relax from busy life & enjoy picnic with families. The Military Mahadev is maintained by the MLIRC, Belgaum. By visiting this place one can enjoy the greenery of nature around.

**Kittur Rani Channamma Statue :** No story of Belgaum is complete without mentioning the great Kittur Rani Channamma (the queen of Karnataka) a symbol of courage & India's first women freedom fighter. Her statue stands sentient over Belgaum at a very prominent square.

**Education Hub :** KLE Society owns number of Engineering, Medical & MBA Colleges in Belgaum & is very famous in India. Vishweshwaraya Technology University (VTU), one of the biggest Technological Universities in India is also situated in Belgaum.

**Maratha Light Infantry Regimental Centre (MLIRC) :** The recruitment & training of the soldiers is done at the Maratha Light Infantry's regimental headquarters in Belgaum. The Motivation hall contains inspiring pieces of deeds & bravery of the battalions in various actions & glory.

**The Suvarna Vidhan Soudha :** Inaugurated by President Pranab Mukherjee in Belgaum on October 11 2012, this historical monuments spreads over 127 acres.

**Industrial Hub :** Belgaum has always been at the forefront of industrial growth in India. It provides the ideal choice for investment opportunities & is one of the fastest growing city with a good Industrial Scenario in the northwestern part of Karnataka. It also has several large industries like INDAL Aluminum Factory, Polyhydron Pvt. Ltd., Quest etc. Also Belgaum is surrounded with the number of sugar factories & known as Sugar city. The Central Government has given green signal for more sugar factories. At present the district has 20 sugar factories.



Within Tilakwadi, besides prestigious **SKYPARK** on M.G. Road just 800 meters from 1<sup>st</sup> Railway Gate in Belgaum city. **VISHAL INFRABUILD LTD.**, offers you a dream home built in a posh locality and unpolluted atmosphere surrounded by Niligiri Plantation. Your home close to nature, temples, market, schools, colleges, banks & railway station.

**Above all in a safe place & value for your money**

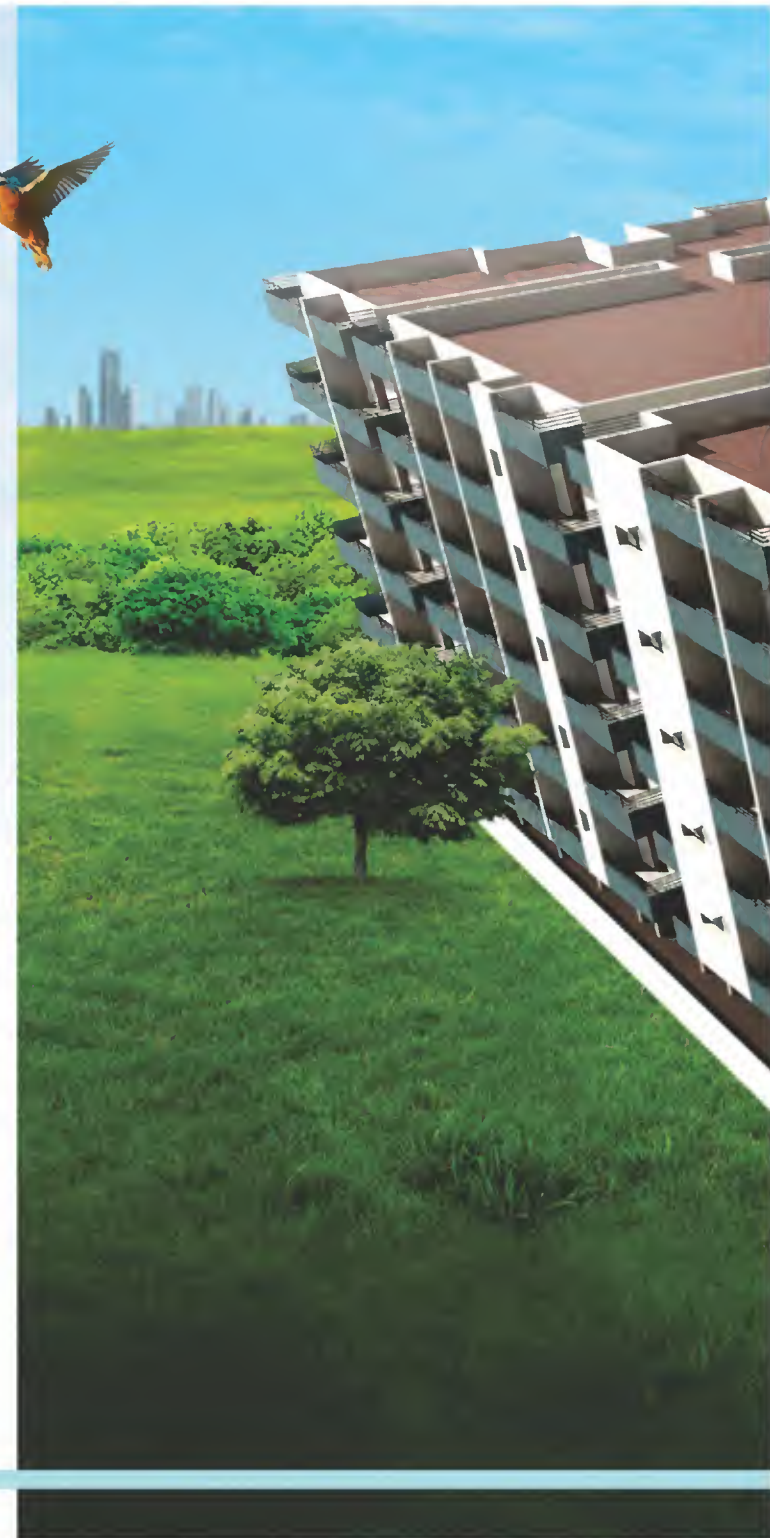


# Skynest

**Vishal Infrabuild** has added a new nest in its tree.... **"Skynest"**.  
The residential embraced with greenery, offers you a good & luxurious 2 BHK situated in a unique serene ambience.

This project will amaze you in such a way that every "TWIG" will enlighten your imagination and dreams.

Definitely.... you deserve more & so you deserve to be here ..... it's a best and safe place for your family.







## AMENITIES

- Close to nature & Greenery.
- Smart Entrance
- Good ventilation with maximum natural light.
- Easy customization option for interiors
- Two automatic lift for the building.
- Vaastu compliant.
- Adequate water supply.
- 24hrs power backup for Lift & Common Areas.
- Car parking
- Round the clock Security.
- Rain water harvesting (Eco-Friendly).





## STANDARD SPECIFICATIONS

### ▪ STRUCTURE

R.C.C. framed structure.

### ▪ DOORS

Main door and shutter shall be of teak wood and remaining internal door frame of JW with commercial flush doors.

### ▪ WINDOWS

Powder coated aluminum windows in all rooms with mosquito mesh along with safety M.S. grills.

### ▪ ELECTRICAL

Concealed copper wiring with Finolex / Anchor or equivalent with Modular switches. T.V. cable & telephone points in living room.

### ▪ FLOORING & TILING

All rooms shall have vitrified tiles. Bathrooms will have glazed tiles up to 7 feet height and Toilets will have glazed tiles up to dado 4 feet height.

### ▪ SANITARY & PLUMBING

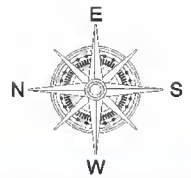
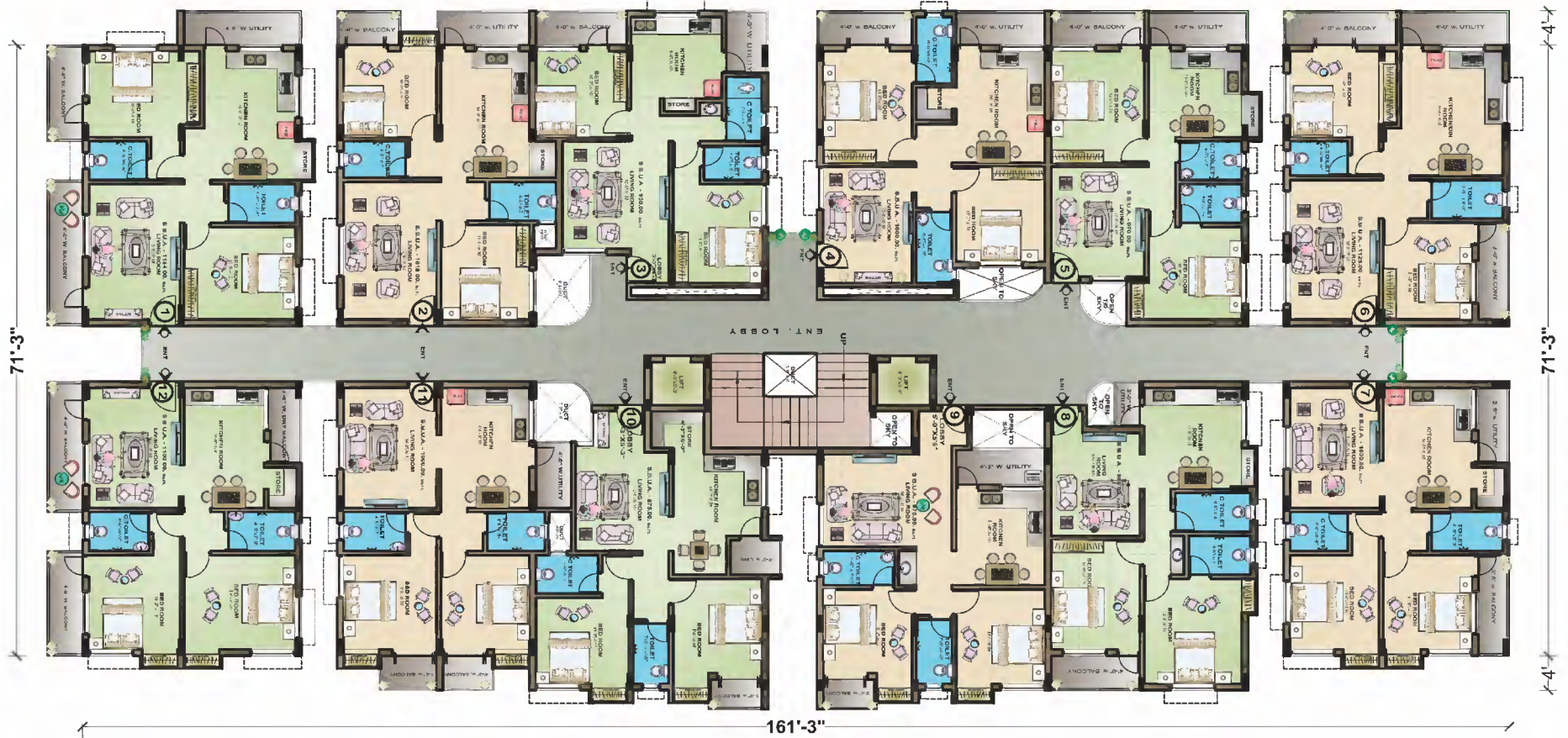
Standard plumbing & Sanitary ware.

### ▪ PAINT

Oil bond distemper paint for internal walls & cement paint for external walls.



# Floor Plan





# Sky nest





#### **ARCHITECT**

Ajit V. Patil Associates  
[www.ajitvpatilassociates.com](http://www.ajitvpatilassociates.com)

Yuvraj Chougule  
Reg. No. CA/2016/77725

#### **CIVIL ENGINEERS & CONTRACTORS**

Anoop Jawalkar Constructions Pvt. Ltd., Belgaum

**STRUCTURAL CONSULTANT** : Vinay Behere, Belgaum.

**VASTU CONSULTANT** : Murali Gupta, Hubli

#### **CHARTERED ACCOUNTANT**

C.A. Sunil Bhide, Belgaum.  
CA. Aditya S. Bhide, Belgaum.

#### **CORPORATE LAW ADVISOR**

Gururaj P. Mutalik, Belgaum.

Yes **VISHAL**  
infrabuild ltd.  
cares more, shares more

# 5853, "Emerald Corner" 1<sup>st</sup> Floor, Maratha Colony, Congress Road, BELGAUM - 06,  
Karnataka, India. Tel. : 0831-4209553, 091645 63353, 093427 08686

E-mail : [infrabuild53@gmail.com](mailto:infrabuild53@gmail.com) | Website : [www.vishalconst.com](http://www.vishalconst.com)



एक कदम स्वच्छता की ओर